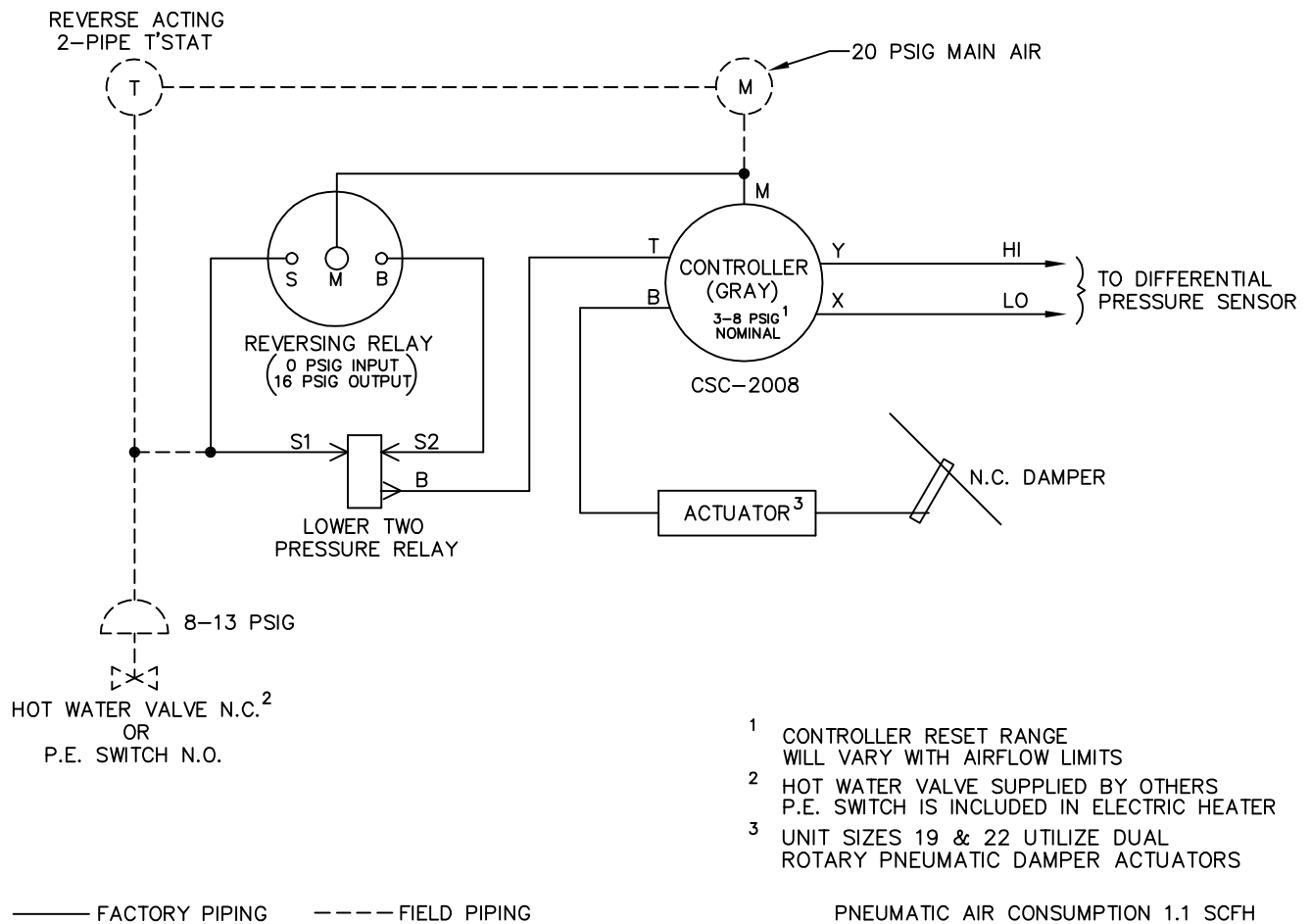
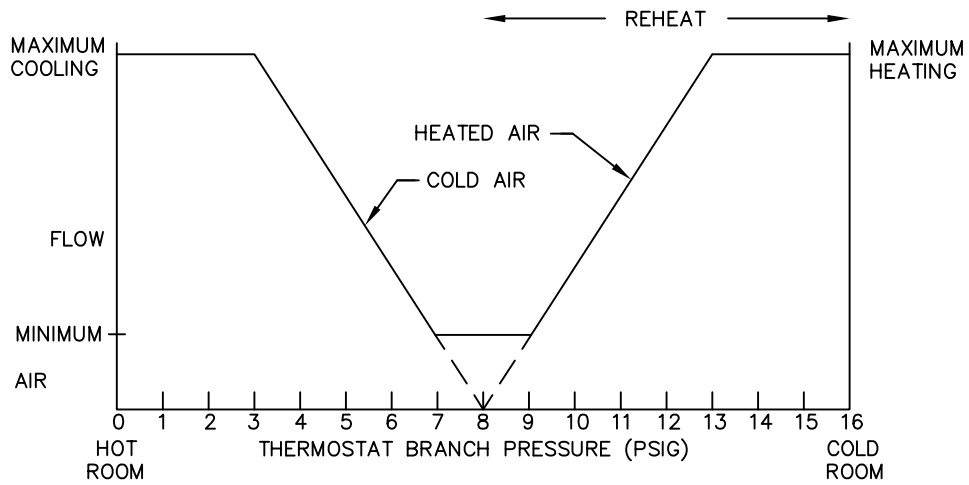


A reverse acting, two-pipe thermostat is required. Damper is normally closed. Reheat control requires a normally closed hot water valve or a normally open P.E. switch. As the space temperature decreases, cold airflow is decreased to minimum position. If the space temperature continues to drop, airflow is increased to maximum position and reheat is energized. Maximum and minimum CFM setpoints are field adjustable.



	TITLE: SD433R PRESSURE INDEPENDENT PNEUMATIC CONTROLS	DRN BY: AWW	DATE: 05/10/94	DRAWING NO. 16379
	THIS DRAWING CONTAINS PROPRIETARY DATA. UNAUTHORIZED DISCLOSURE, REPRODUCTION, OR USE IS STRICTLY PROHIBITED WITHOUT WRITTEN PERMISSION	CKD BY: WAE	DATE: 10/08/08	

UNCONTROLLED WHEN PRINTED