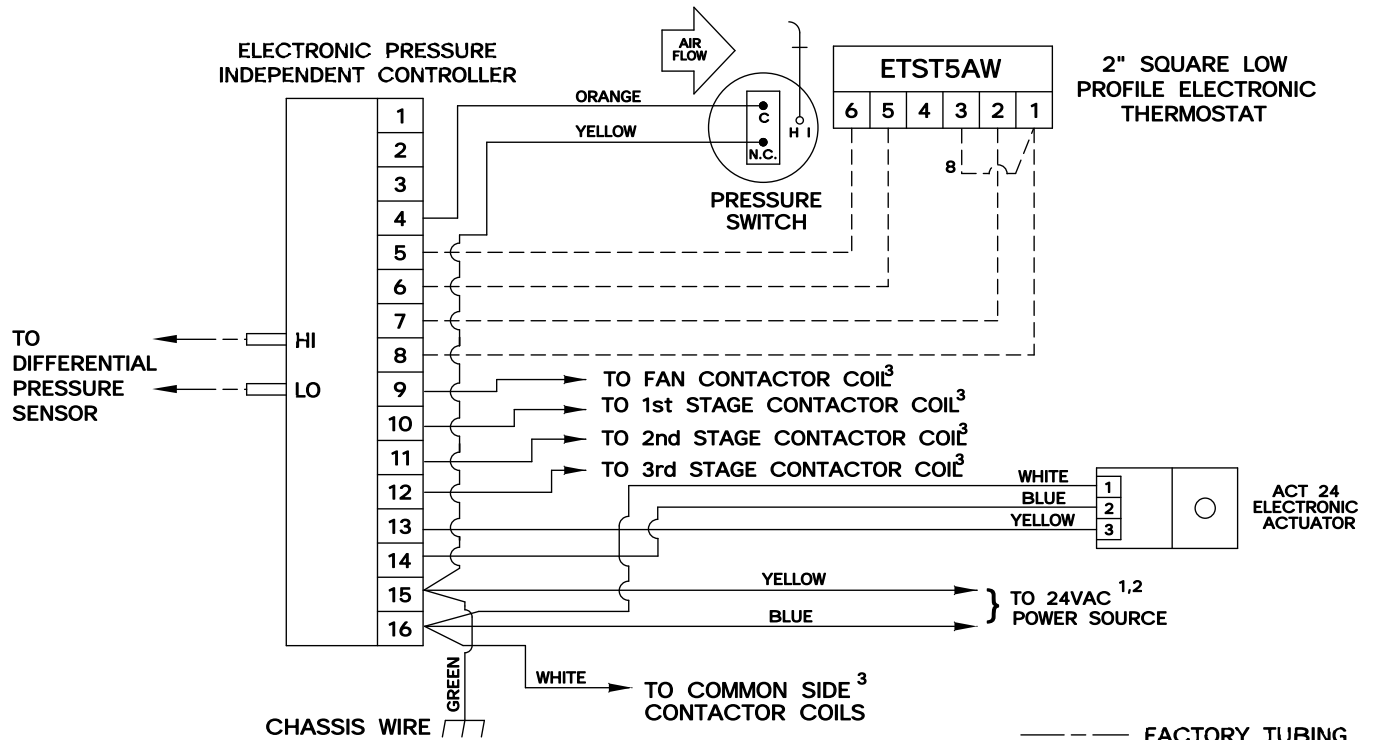
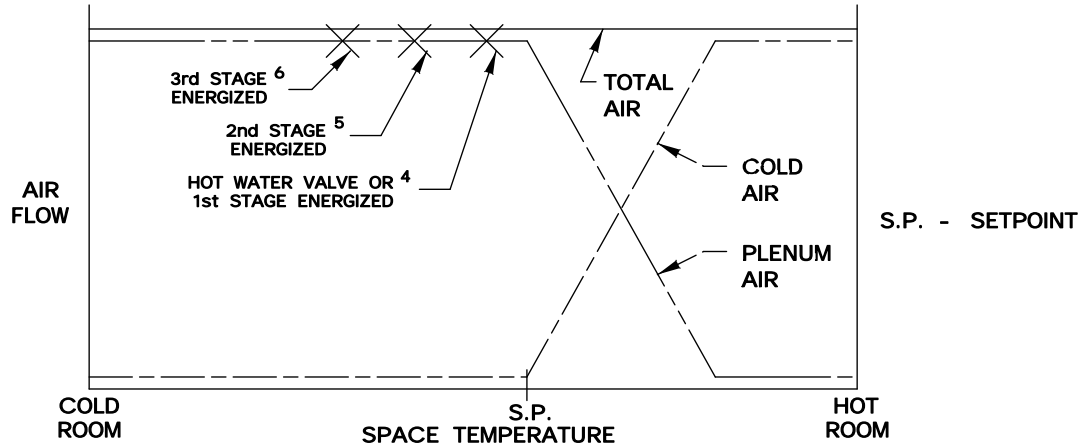


This series of control sequences applies to Series Flow fan powered terminals providing up to three stages of electric or hot water heat. The unit fan draws either cold primary air or warm plenum air to satisfy the load. If plenum air fails to maintain setpoint, heat is energized in stages to satisfy the load. When system air is failed, the unit fan and heat are de-energized for night operation. Air volume limits are located at the thermostat.



<sup>1</sup> MINIMUM 40 VA

<sup>2</sup> IF ELECTRIC HEAT IS PROVIDED, TRANSFORMER AND FAN RELAY ARE LOCATED IN HEATER ENCLOSURE- REFER TO HEATER WIRING DIAGRAM. IF HOT WATER HEAT IS PROVIDED, REFER TO FAN WIRING DIAGRAM FOR TRANSFORMER AND RELAY WIRING, AND OTHER HIGH VOLTAGE WIRING.

<sup>3</sup> MAXIMUM 10 VA HOLDING COIL

<sup>4</sup> ENERGIZED 2° F BELOW SETPOINT

<sup>5</sup> ENERGIZED 3° F BELOW SETPOINT

<sup>6</sup> ENERGIZED 4° F BELOW SETPOINT

<sup>7</sup> IF HOT WATER HEAT IS USED FIELD WIRING IS REQUIRED.

<sup>8</sup> WIRE TERMINAL 3 TO TERMINAL 1 IN THE FIELD

----- FACTORY TUBING  
 - - - - - FIELD WIRING  
 \_\_\_\_\_ FACTORY WIRING

SEQ. NO.	CONTROLLER NO.	HEAT STAGES	NOTES
FC701SB	ETPR0FY	0	—
FC702SB	ETPR1FY	1	7
FC703SB	ETPR2FY	2	—
FC704SB	ETPR3FY	3	—

<b>ENVIRO-TEC®</b> ENGINEERING FOR EXCELLENCE	<b>FC701, FC702, FC703 &amp; FC704 SB</b>	
	PRESSURE INDEPENDENT	DRAWING NO:
ELECTRONIC CONTROLS	20834	
DRAWN BY: WDD	DATE: 04/06/00	REV NO: 00
REV DATE:	APPROVED BY: W.E.	