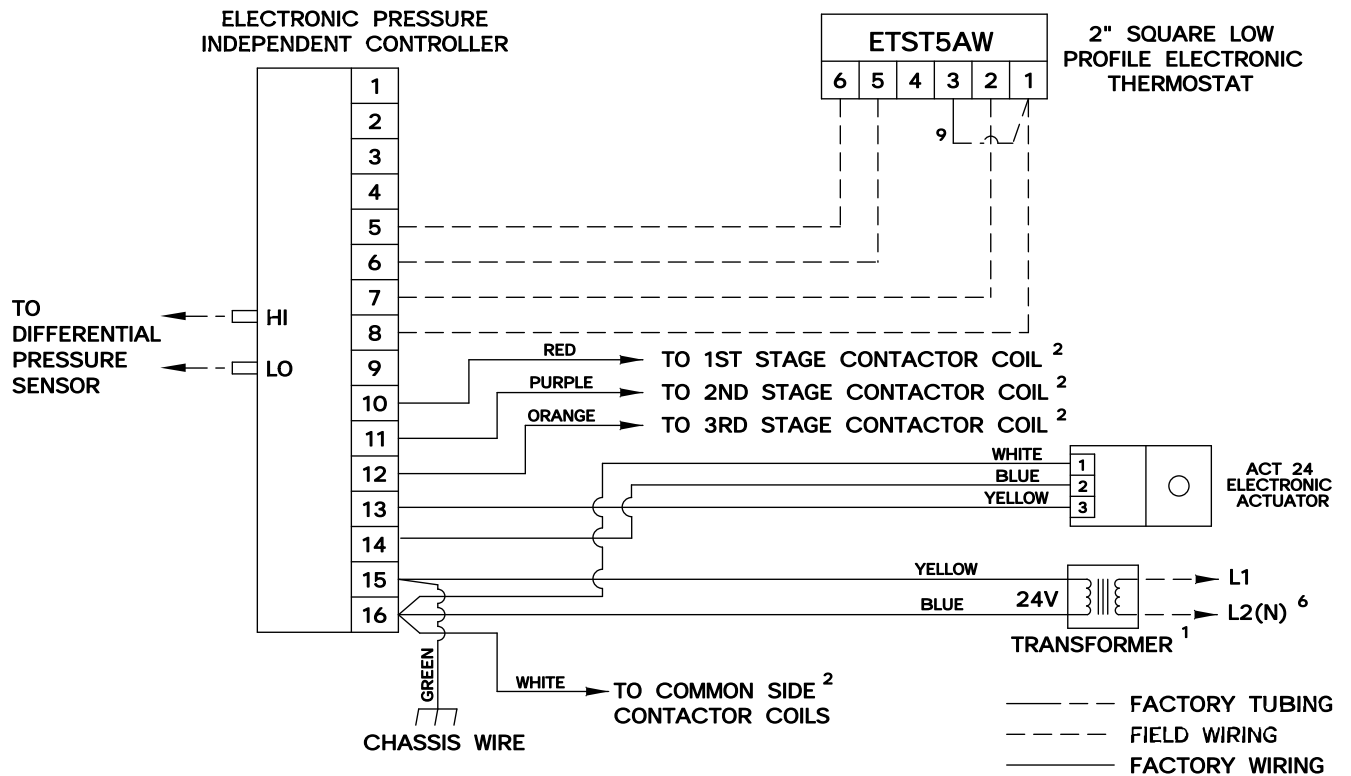
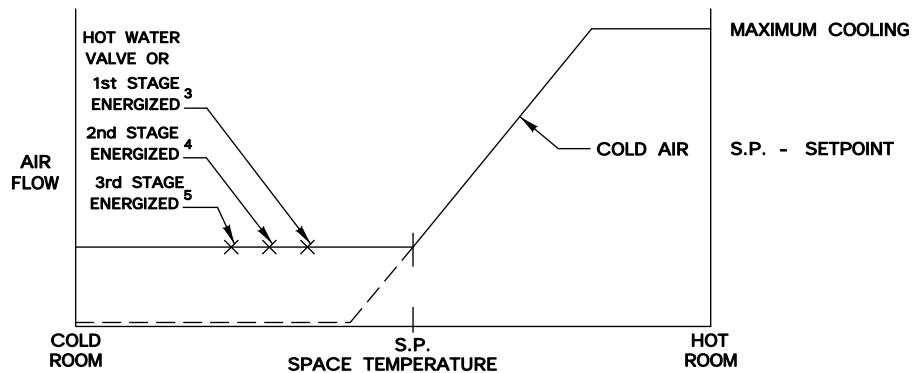


This series of control sequences provides single duct variable air volume cooling with up to three stages of electric or hot water reheat. As space temperature drops, airflow is reset from maximum to minimum setpoint. As space temperature continues to drop reheat is energized in stages to satisfy the load. Air volume limits are located at the thermostat.



- ¹ MINIMUM 40 VA
- ² MAXIMUM 10 VA HOLDING COIL
- ³ ENERGIZED 2° F BELOW SETPOINT
- ⁴ ENERGIZED 3° F BELOW SETPOINT
- ⁵ ENERGIZED 4° F BELOW SETPOINT
- ⁶ IF ELECTRIC HEAT IS PROVIDED, TRANSFORMER IS LOCATED IN HEATER ENCLOSURE- REFER TO HEATER WIRING DIAGRAM.
- ⁷ WIRE FROM TERMINAL 5 OF CONTROLLER TO TERMINAL 6 OF THERMOSTAT NOT REQUIRED.
- ⁸ IF HOT WATER REHEAT IS USED, FIELD WIRING IS REQUIRED.
- ⁹ WIRE TERMINAL 3 TO TERMINAL 1 IN THE FIELD.

SEQ. NO.	CONTROLLER NO.	HEAT STAGES	NOTES
SD701SB	ETPR0	0	7
SD702SB	ETPR1	1	8
SD703SB	ETPR2	2	—
SD704SB	ETPR3	3	—



SD701,SD702,SD703 & SD704 SB

PRESSURE INDEPENDENT

DRAWING NO:

ELECTRONIC CONTROLS

20823

DRAWN BY: WDD	DATE: 04/06/00	REV NO: 00	REV DATE:	APPROVED BY: W.E.
------------------	-------------------	---------------	-----------	----------------------