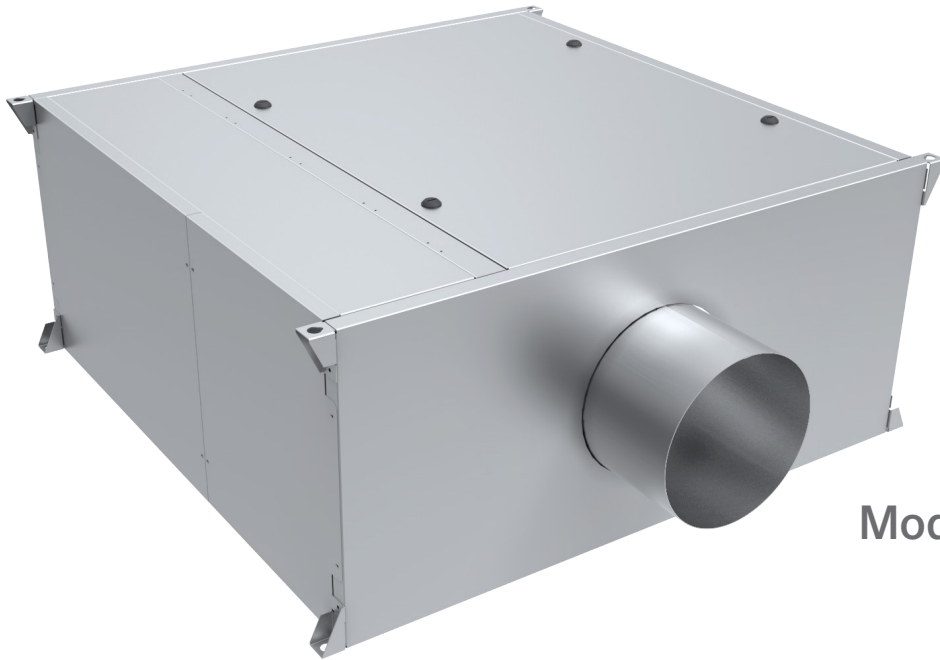


CRB Series

Series Flow, Fan-Powered VAV Terminal Units



Model CRB

Owners

AHRI Standard 880 certification ensures exacting performance. Concerned about maintenance and serviceability? Top and bottom service panels with durable, low-profile latches are standard on CRB Series Flow, Fan-Powered VAV Terminal Units, allowing the motor-blower assembly to be easily removed and reinstalled. An optional staged or proportional SSR electric heat rack utilizes innovative plug and play technology for convenient field-serviceability. For applications requiring hot water reheat, the CRB is available with a 1, 2, 3, or 4 row hot water coil, and optional factory-provided/factory-mounted on/off, incremental, or proportional controls.

Contractors

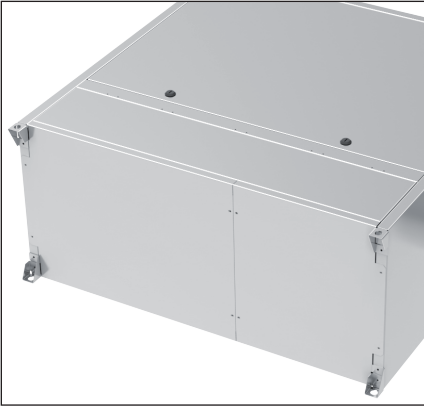
CRB Series Flow, Fan-Powered VAV Terminal Units provide maximum performance while reducing installed cost to the contractor. The CRB is equipped with integrated vibration isolating hanger brackets, an integrated 180-degree flippable electrical control enclosure with hinged NEC bottom access doors, additional side access panels, and is available with optional factory-provided and factory-mounted valve packages.

Designers

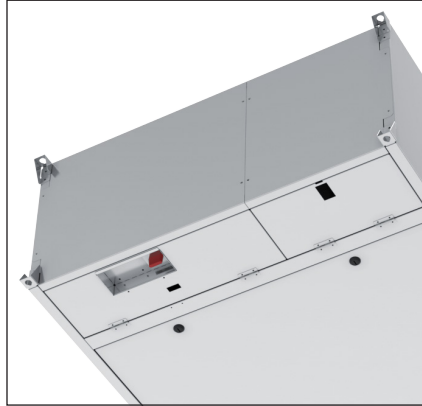
Enviro-Tec CRB Series Flow, Fan-Powered VAV Terminal Units offer an array of options and a number of available sizes, allowing for unparalleled flexibility. Ranging from 100 to 4400 CFM, eight unit sizes allow the CRB to accurately match specified room-load requirements. Available with ECM motor, Solo/Sync motor control, ZEC500 or ZEC510 DDC (Direct Digital Control), optional hot-water coils, or optional electric heating coils. CRB Series Flow, Fan-Powered VAV Terminal Units provide the ultimate in comfort and flexibility.



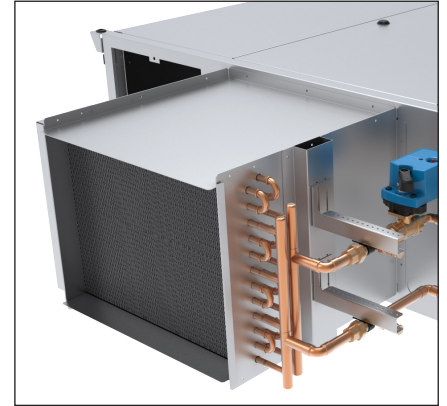
Innovative Design Simplifies Installation & Service



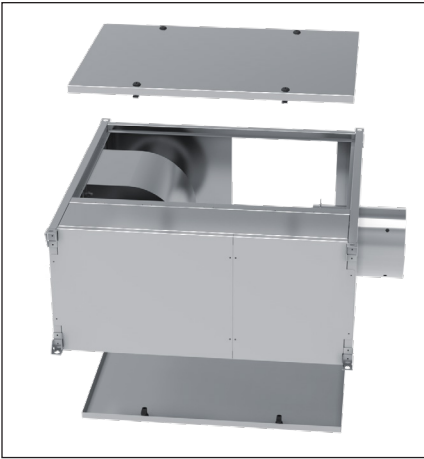
Standard Integrated 180-degree flippable control enclosure and vibration isolating hanger brackets.



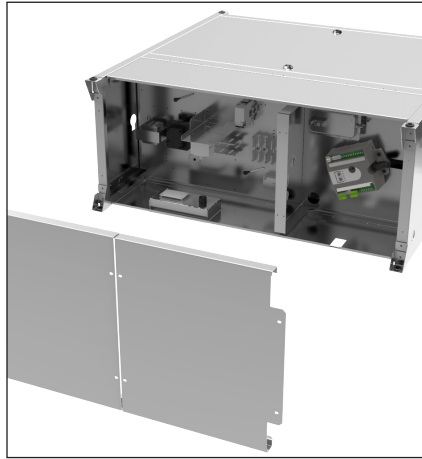
Hinged NEC bottom access doors with externally-mounted Solo/Sync motor control.



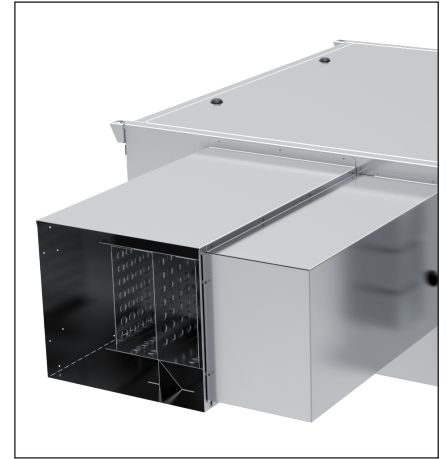
Optional hot water coil with on/off, incremental, or proportional controls.



Top and bottom service panels allow for quick motor and blower access.



Additional side panels for access to high-voltage and low-voltage controls.



Optional duct-mounted staged or proportional SSR electric heat.

Standard Features

- Unit Sizes: 07, 10, 12, 15, 20, 25, 35, 45
- CFM Range: 100-4400 CFM
- Integrated 180-degree Flippable High/Low-Voltage Control Enclosure With Hinged NEC Bottom Access Doors and Additional Side Access Panels
- Integrated Vibration Isolating Hanger Brackets
- Top and Bottom Service Panels With Durable, Low-Profile Latches
- FlowStar™ Inlet Airflow Sensor
- 120, 208-230, 277 Volt Single-Phase EC Motors
- Solo/Sync Motor Control Technology
- ZEC500 Standalone, or ZEC510 BACnet and Verasys™ DDC Controls

Optional Features

- Factory-Provided and Factory-Mounted Valve Packages
- Consignment or Field-Supplied Controls
- 480 Volt Three-Phase EC Motor
- 120, 208-230, 277 Volt Single-Phase PSC Motors (Fall 2020)
- Hot Water Coil With On/Off, Incremental, or Proportional Controls - 1, 2, 3, or 4 Row Options
- Staged or Proportional SSR Electric Heat
- Fused or Non-Fused Disconnect Switch
- 90-Degree Electrical Control Enclosure

ENVIRO-TEC is a registered trademark and FlowStar is a trademark of Johnson Controls, Inc. in the United States of America and other countries. Other trademarks used herein may be trademarks or registered trademarks of other companies.